

## WORLDWIDE LEADING MANUFACTURER AND SERVICE PROVIDER OF CRANES AND MATERIAL HANDLING SOLUTIONS.

HIGHEST QUALITY STANDARDS  
VANGUARD TECHNOLOGY  
PROCESS EFFICIENCY  
RELIABILITY  
SAFETY



GERMANY PACKAGING TECHNOLOGY GROUP

## CLESCRANE

**Address:** Room 902, Building 6, No. 26 Dongqing Street, Zhengzhou, Henan, P.R.China; P.C.: 450000

**Tel:** +86-371-5532 8269

**Email:** [inquiry@clescrane.com](mailto:inquiry@clescrane.com)

**Website:** [www.clescrane.com](http://www.clescrane.com)





CHINESE PAPER MAKING COMPANY (NAN CHANG)

In September of 2014, agreement was reached between Germany Packaging Technology Group and Clescrane. 8 sets of CJZ jib cranes were supplied to a major paper making enterprise in China, which is a large-scale modern paper making enterprise integrating the pulp, paper, hot spot and environmental protection. The company has the world's advanced low quantity coated paper production line, bleached thermal mechanical pulp (BTMP) production line, waste paper deinking pulp (DIP) production line and an annual output of 350,000 tons of high-grade food packaging paper production line. 4 of the 8 sets were used in their factory in Nanchang and the other 4 in Zhanjiang.

## GERMANY PACKAGING TECHNOLOGY GROUP

Germany Packaging Technology Group was founded in 1975. As the leading manufacturer for packaging equipment for bulk products and pallet carrier and logistics system in the world, it headquartered in Krevor City of lower Rhine River, Germany.

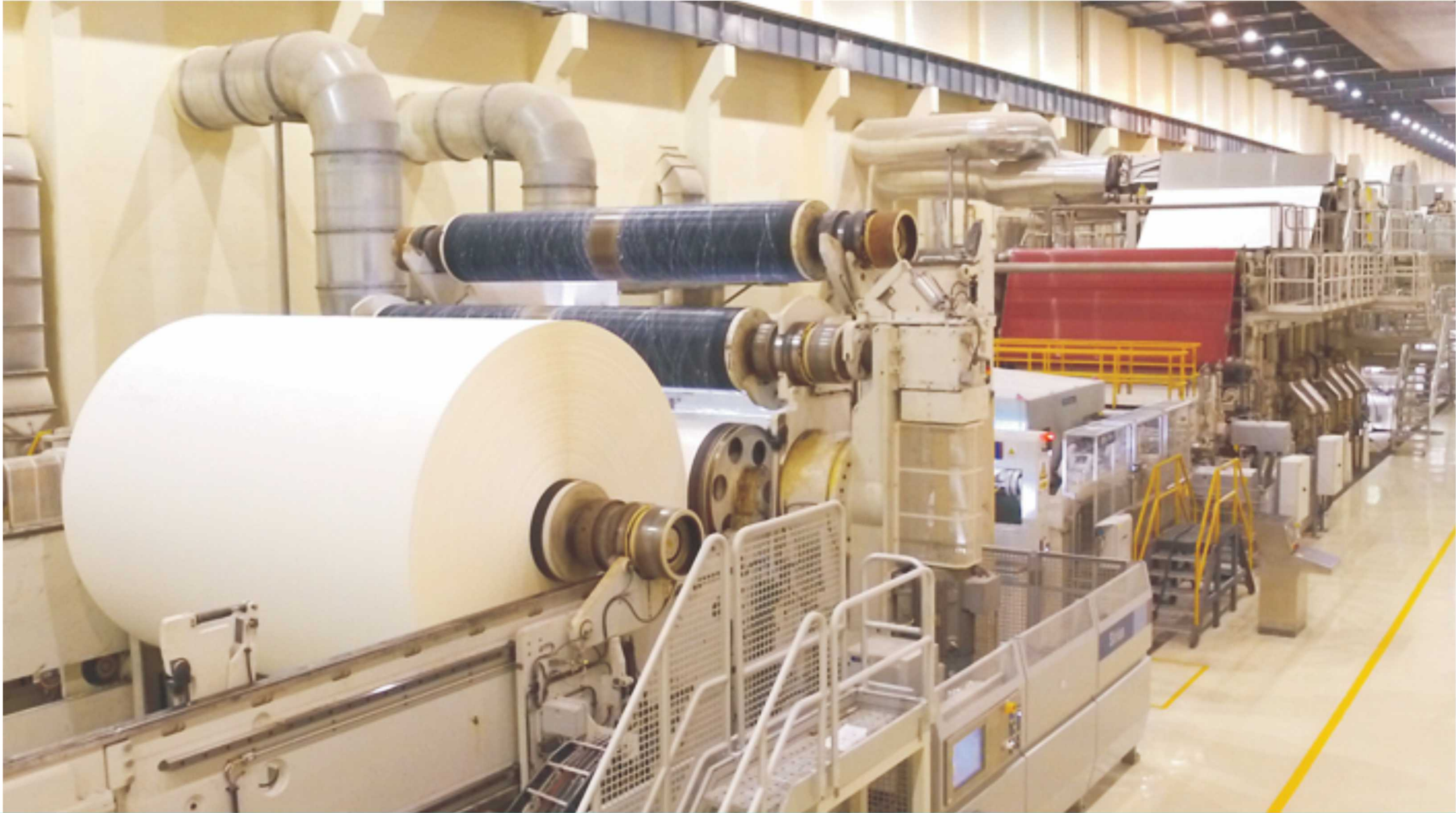


CHINESE PAPER MAKING COMPANY (ZHAN JIANG)



CLESCRANE  
YOUR PARTNER  
TAILOR MADE SOLUTIONS

Paper making industry has always been one of the major industries for Clescane to provide solutions. We make our clients satisfied with our solutions with our rich experience and high professionalism. Regardless of the application of the process, we can help customers improve efficiency.

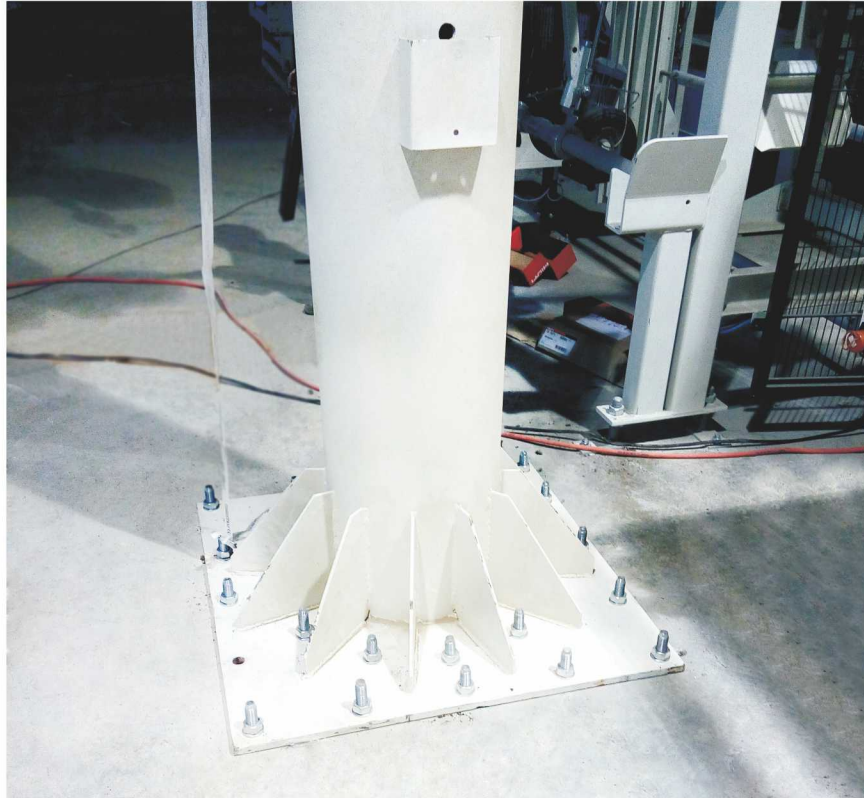


Equipment list

Model	Qty
CJZ 1t-2.8m H=4m A3	8

- Simple installation
- Shorten handing time, improve work efficiency
- Accurate positioning, easy operation
- Cost-effective product





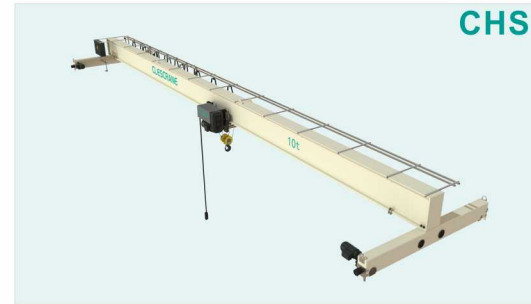
HILTI chemical bolts were supplied for this project. Hilti is a well-known enterprise in the world construction industry. It provides high quality technology, leading products and systems for construction industry all over the globe. Innovative solutions and high value-added professional services are offered, too. We have a long-term and steady cooperation with HILTY.

After installation and test, Germany Packaging Technology Group and the Chinese paper making company are both satisfied with Clescrane products and service. As the expansion of Clescrane's business, more and more clients will choose us. We will always provide our safest and most reliable and efficient material handling solutions and high quality products for our clients from different industries.





# PRODUCTS



CHS

CHS Series Single Girder Overhead Crane  
Max. Load: 20t



CHX

CHX Series Single Girder Suspension Crane  
Max. Load: 10t



CWG

CWG Series Double Girder Gantry Crane  
Max. Load: 320t



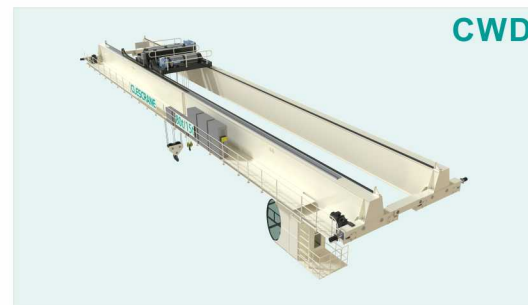
CH(W)B

CH(W)B Series Semi Gantry Crane  
Max. Load: 100t



CHD

CHD Series Double Girder Overhead Crane  
Max. Load: 100t



CWD

CWD Series Double Girder Overhead Crane  
Max. Load: 320t



CJZ

CJZ Series Pillar Mounted Jib Crane  
Max. Load: 10t



CH

CH Series Wire Rope Electric Hoist  
(for Single Girder Crane)  
Max. Load: 20t



CHG(S)

CHG(S) Series Single Girder Gantry Crane  
Max. Load: 20t



CHG(D)

CHG(D) Series Double Girder Overhead Crane  
Max. Load: 100t



CH

CH Series Wire Rope Electric Hoist  
(for Double Girder Crane)  
Max. Load: 100t



CW

CW Series Open Winch Trolley  
Max. Load: 320t





# SERVICE

Our service solutions are specially made based on different requirements of individual clients.

Meeting their standards could remove any of their worries.

Including:

- Customized solutions
- Reliable, efficient and safe crane equipment
- High quality packaging
- Installation and Assembly & Test running
- Professional training
- Plenty of spare parts
- Maintenance
- Analysis and Suggestions
- Intelligent crane design software
- The experienced team of engineers

Clescrane's service pack is safe and costs less.

Clescrane's service pack also applies to cranes and hoists produced by other manufacturers.